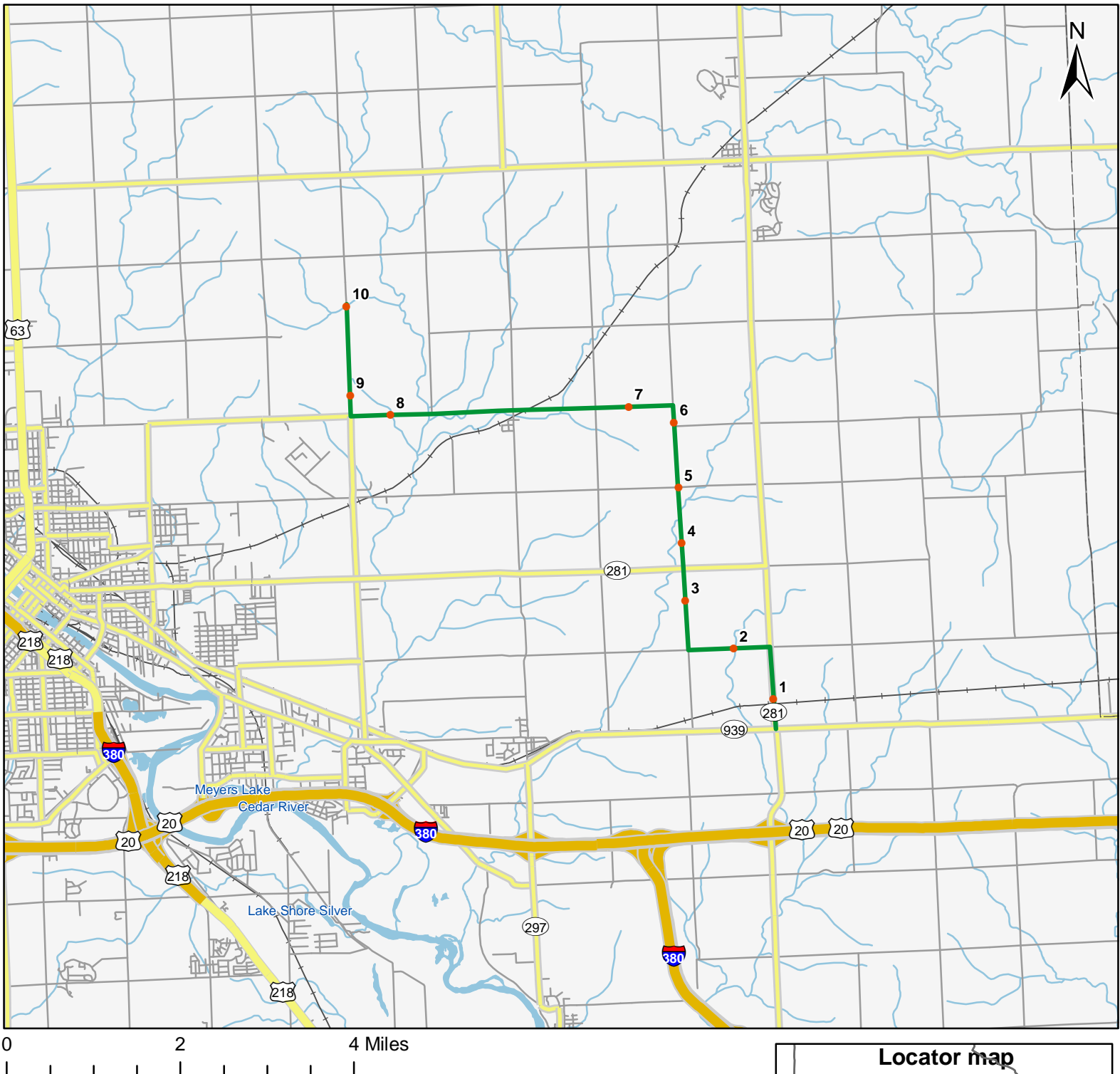


North American Amphibian Monitoring Program



Route: 360511 Raymond, IA



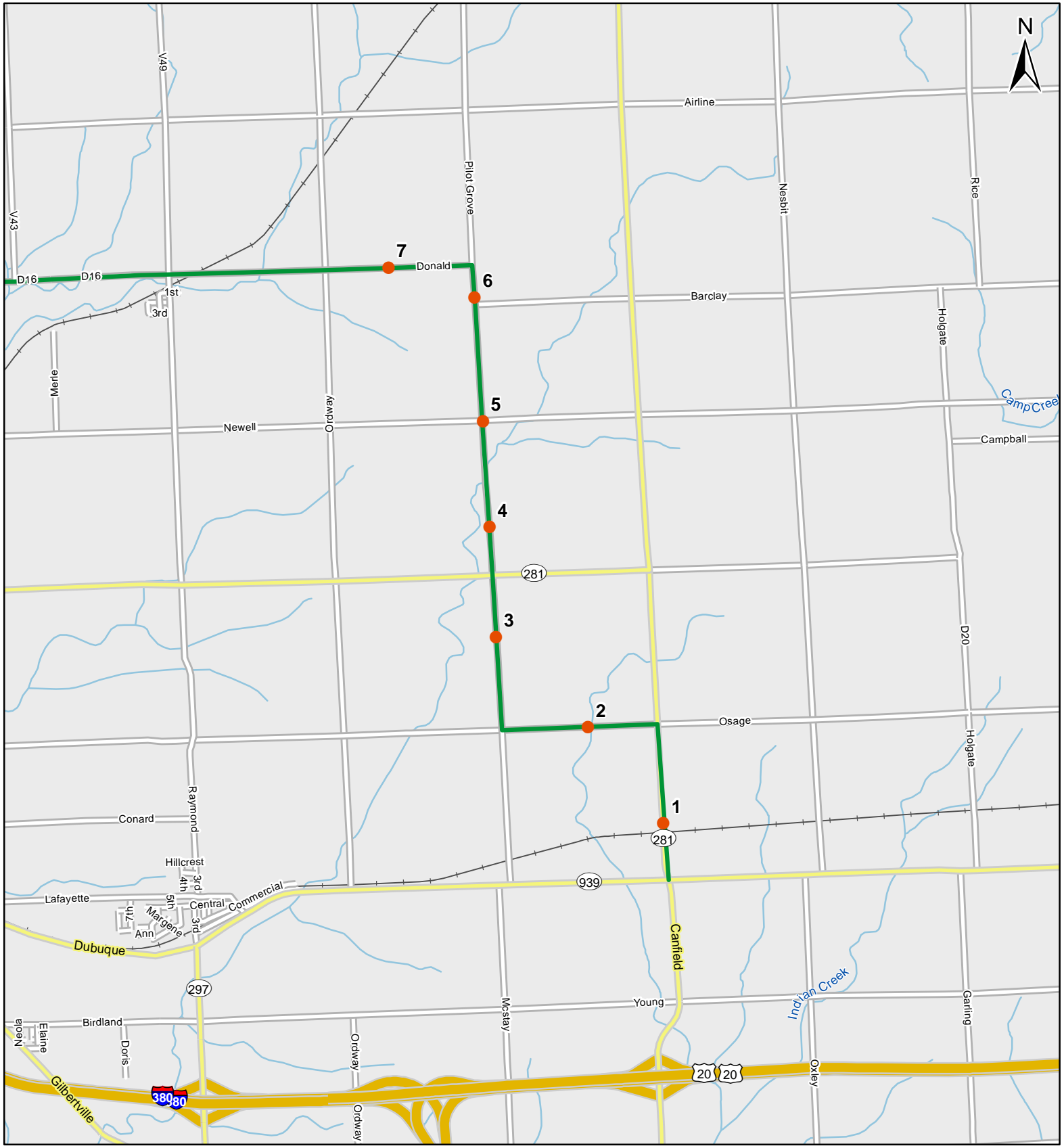
Legend

- Stop Locations
- Route Path



For more information, please visit the NAAMP website:
<http://www.pwrc.usgs.gov/naamp/>

Route: 360511 Raymond, IA



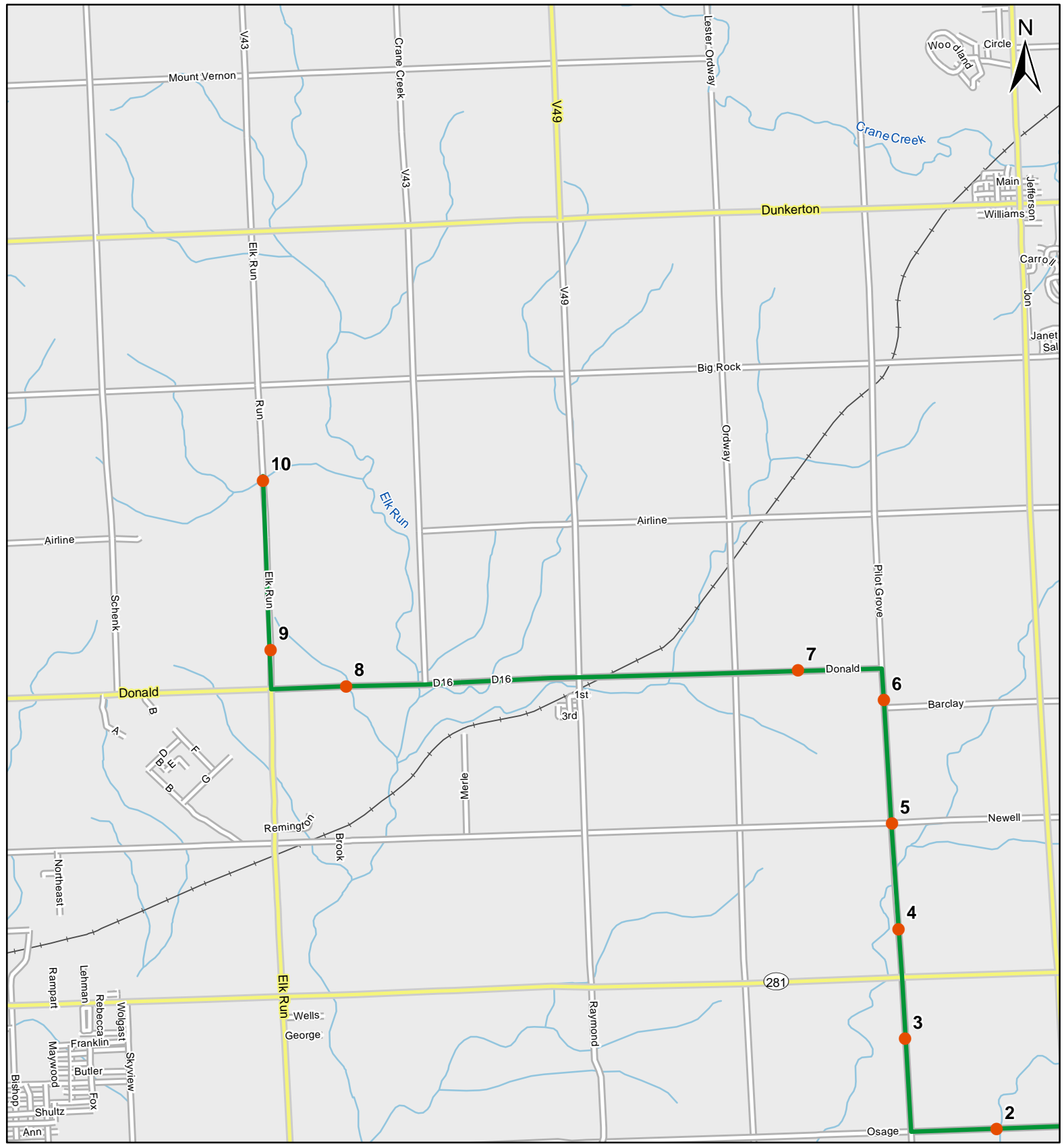
0 1 Miles

1:50,000

Legend

- Stop Locations
- Route Path

Route: 360511 Raymond, IA



1:50,000

Legend

- Stop Locations
- Route Path



Frog and Toad Call Survey Route Description

Route ID **360511**

Established:

Site Number	Name	County	Latitude	Longitude	Directions
1	0.3	Black Hawk	42.4738007	-92.1598969	Stand of cattails in ditch on left side of road. Surrounded by crop fields.
2	1.4	Black Hawk	42.4831009	-92.1688995	Turn left on Osage Rd. Small field stream on left/right sides of the road with cattails. Small bridge over it. Near a house, may need to ask permission.
3	2.5	Black Hawk	42.4919014	-92.1800003	Turn right on pilot grove. Small, sinuous stream in grassy field on left side of road. Further from road, trees surround the stream.
4	3.2	Black Hawk	42.5022011	-92.1801987	Field drainage area on left/right sides of road under bridge/culvert. Trees surrounding area with willows. crop fields surround all area. A little further up (.2 miles) is a large stream.
5	3.9	Black Hawk	42.5121002	-92.180397	On the corner of pilot grove and Newell Rd, cattail stand in ditch on left side of road. Surrounded by corn fields.
6	4.7	Black Hawk	42.5237999	-92.1808014	Cattail stand in ditch on left side of road in front of farm. Crop fields surround ditch/farm. Cattails slightly mowed over.
7	5.5	Black Hawk	42.5269012	-92.1914978	Turn left on Donald st. Cattail stand in ditch on left side of road in front of a field clearing. On low part of road.
8	8.4	Black Hawk	42.5271988	-92.2489014	Cross over N Raymond Rd and continue to D16 (Donald st). Large stream on left side of road surrounded by buffer zone/many trees next to corn field.



Frog and Toad Call Survey Route Description

9	9.2	Black Hawk	42.5309982	-92.2583008	Turn right on N Elk Run Rd. Large cat tail stand on left side of road. Corn fields on all sides surrounding.
10	10.2	Black Hawk	42.5469017	-92.2584	Cat tail stand on right side of road with stream on left side of road. Small bridge over stream. Next to grassy yard/field on left side of it and corn field on right side of it. Trees surround stream.